



Museum Hours: 9-5 Daily
 W11660 U.S. 2, Naubinway, MI 49762
 906-477-6298
 E-mail: info@snowmobilemuseum.com
 Webpage: www.snowmobilemuseum.com
 Facebook: Top of the Lake Snowmobile Museum



Top of the Lake
 Snowmobile Museum

Naubinway, MI

22nd Annual Top of the Lake Show & Ride

Inside this issue:

Show Winners	2
New Members	2
Upcoming Events	2
Grand Opening	3
Building Fundraiser/Pledge Form	3
Facebook Information	4
Pre-schoolers Visit Museum	4
St. Ignace Tractor Show	4
Amazon Smile Program	5
Rogers City Club Donation	5
New Building Report	6
Meeting Room for Rent	6
Soo I-500 Vintage Show	6
Advertisers	7-9

You knew it was going to be a great weekend for the Top of the Lake Snowmobile Museum's 22nd annual Show and Ride when a new 7-8" of fluffy snow fell on Thursday night prior to the antique and vintage ride scheduled for Friday morning February 14th.

Friday started bright and sunny with breakfast served in the Naubinway Pavilion by the Top of the Lake Community Association. Shortly after breakfast many antique and vintage machines started popping up everywhere in town preparing for the upcoming ride staged to leave Naubinway at 10:30am for the trip to the Cranberry Lodge on the Hiawatha Sportsman's Club.



Favorite Featured Sled – owned by Dean Wall, Sand Lake, MI

At 10:30 am, ride co-ordinators

starting waving the 200 plus machines out onto the trail in groups of 10 to 20 machines at a time for the 26 mile round trip ride. Trail riders were staged at critical points along the trail to help riders with directions. It was a beautiful ride through the forest with all the fresh snow and most machines made the trip successfully to the Cranberry Lodge.

The old BBQ grill was soon fired up and everyone had their fill of hot dogs and brats while visiting with new and old friends who had made the ride. After a nice break, snowmobilers began the trip back to Naubinway with the majority of the machines successfully completing the trip.



Dan Lancour & Sandy Ketcher were busy cooking hotdogs. Thanks to the Ketchers for donating the hot dogs and buns.!

(Continued on page 2)

2014 Show & Ride Raffle Winners:

- 1st Prize-1983 John Deere Snowmobile (donated by Tim Wattson) Chuck Ulch, Harrison
- 2nd – \$100 Gas Card (donated by Shute Oil)—Eric Hart, East Jordan, MI
- 3rd – "Poker Runs" Print (donated by Museum)—Steve Calandrino, St. Clair Shores MI
- 4th – Snowmobile Rocker (donated by Museum)—Vicky Rowe, Kendallville, IN
- 5th – \$50 Cash (donated by Museum Member)—Sally Schultz, Naubinway, MI

Tickets are now available for our next raffle drawing on Sept 13 at our Swap Meet & Auction. Prizes include:

- 1st prize – 1969 Polaris Mustang (donated by Zeke DeWyse)
- 2nd – 8x8 Storage Shed or \$500 cash
- 3rd – \$100 Gas Card (donated by Shute Oil)
- 4th – "Poker Runs" Print (donated by Museum)
- 5th – Garden Center (donated by Norm & Kay Cader)
- 6th – \$50 Cash (donated by Museum Member)

- Need not be present to win. All proceeds go to the Museum Building Fund
- Tickets are available at the Museum. Call or email to get yours!



Below: 1st Prize Show & Ride winner, Chuck Ulch, proudly sits on his 1983 John Deere snowmobile



The variety of machines on the ride was awesome to see and only a couple of tow ropes were seen throughout the day. Fun was had by all on the ride. As always the Museum would like to express their thanks to the Hiawatha Club for hosting the ride to the Cranberry Lodge.

After returning to Naubinway most riders congregated at the NEW Top of the Lake Snowmobile Museum for the grand opening at 4:00pm. Several local community leaders expressed their thanks to the Museum's leadership for all their hard work in bringing the Museum to Naubinway. At 4:00 pm the Museum's board members gathered to cut the ribbon to officially open the new museum. After the opening, a celebration cake was served for all those in attendance and many local women furnished their specialty soups and goodies for everyone to enjoy.

Saturday opened clear and nippy for the snowmobile show in downtown Naubinway. Before long the entire parking area was filled with all types of sleds. The featured sleds for this 22nd Annual Show were Side by Side machines. There was an excellent turnout of these machines ranging from a Model A, Trackers, Luv Bugs, Fox Tracs and Arctic Cats.

Most in attendance journeyed to the Township Hall in Engadine to enjoy a great buffet dinner prepared by Ethel Toms and her crew. After dinner the local merchants association held a can raffle to support their activities. The Museum held their raffle drawing for the John Deere snowmobile and five other prizes. Chuck Ulch of Harrison, MI was the excited winner of the 1st prize.



Taking a break during Friday's ride

John McGuirk presented a short talk covering the many types and shapes of Side by Side snowmobiles that have been manufactured over the years. The banquet wrapped up with a live auction with many snowmobile related items to support the new museum. As in the past, the museum would like to thank Ted Postula for his support of the museum with his skills as an auctioneer.

The banquet adjourned with Museum supporters saying their goodbyes and making plans to return for next year's show and ride on Feb. 20 & 21, 2015.

Written by John McGuirk



Show Winners:

Fun Ride Favorite/Antique – Frank Paris, Gwinn, MI on a Hus Ski 444
Fun Ride Favorite/Vintage – Bob Suchey, Vanderbilt, MI on a Ski Doo Elite
Favorite Featured Sled – Dean Wall, Sand Lake, MI with a Model A
Tow Strap Award – Matt Beemer, Lapeer, MI on a Scorpion (it broke down for the 3rd year in a row)
Special button drawing – Aaron Schroeder, Engadine



Upcoming Events:

St. Ignace Tractor and Snowmobile Show September 5 & 6, 2014:

The Museum has been asked by the St. Ignace Chamber and the Visitor's Bureau to have a snowmobile show in conjunction with their annual Tractor Show, the weekend of Sept. 5 & 6, 2014. Bring your snowmobile and join us for a fun show! **See related article on page 4.**

July 4-6th - 4th of July, 2014

The museum will be open extended hours for the fun Naubinway weekend.

Saturday, September 13, 2014

8th Annual Swap Meet and Auction at the new building on US 2.

February 20 & 21, 2015

23rd Top of the Lake Show & Ride. The featured sled will be the Skiroule.

Welcome New Members!

If you would like to become a supporting member, or if you need to renew your membership, call the Museum. The cost is \$50 per year, and is renewed in July.

- Kirby & Jennifer King, Mackinac Island
- Bruce Hamill, Engadine, MI
- Todd Seelye, Marion, MI
- Vern & Ruth Johnson, Engadine, MI
- Jeff & Penny Johnson, McBain, MI
- John Wojnaroski, Oscoda, MI
- Walt Lach, Luzerne, MI
- Jim Dickie, Chesaning, MI
- Tim Miller, Naubinway, MI
- Gary Gustafson, Trout Creek, MI
- Ron Paris, Gwinn, MI
- Scott Collins, L'Anse, MI
- Frank Paris, Gwinn, MI
- Matthew Villanueva, Allen Park, MI
- Germain Rivard, Chapais, Quebec

WELCOME

Website Info

The Museum's website address is:
www.snowmobilemuseum.com

We feature various snowmobiles, sell gift shop items, and you can become a member online. You can advertise on the website with a banner ad for \$100 a year.

All proceeds from our sales go to the Museum. Please contact Marilyn if you interested in any information about the Museum or the website.

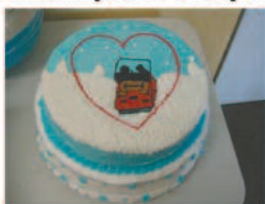
Visit us on Facebook:
"Top of the Lake Snowmobile Museum"

You do not need a Facebook account to view our Facebook page.

Grand Opening-A Huge Success!

The Museum's Grand Opening was held on February 14 during the 22nd Annual Show & Ride weekend. We officially opened on October 19, 2013, but the Board decided to wait until the show weekend for the Grand Opening. There was a great turnout of 200 + people to help us celebrate. We also had most of the dignitaries return who were here for our Groundbreaking in May, 2013. Dale McNamee, from State Senator's Tom Casperson's office; Jim Hill, Mackinac County Board; Cleo Smith, Garfield Twp Supervisor; and Scott Hozee, State Savings Bank. Each said a few words to congratulate everyone on the great project.

Our local ladies furnished an amazing variety of soups and goodies for all to enjoy, and Jan Fergin made the Grand Opening cake. Thank you to everyone who supports us in any way!



Grand Opening cake prepared by Jan Fergin

Right:: Almost 200 people attended the Museum's Grand Opening



Pictured above: Charlie & Marilyn Vallier, Cleo Smith (Garfield Twp Supervisor), John Batchelder, Bruce Gustafson (Board Members), Jim Hill (Mackinac Co Board), John Ketcher (Board Member) and John McGuirk (Vice Chairman of Museum Board)



Building Fundraiser/Pledge Form—501c3 Not-For-Profit Corporation

The Museum Board is seeking funding to continue support for the new building on US 2 in Naubinway. A business, Snowmobile club or person who donates will have your name on our donor wall. You will also receive a tax-deductible receipt. \$1000 donors will also receive either lifetime gold membership or a free banner ad on the museum website for five years.

**Return form to: Top of the Lake Museum
P.O Box 2
Naubinway, MI 49762**

The fundraising contribution will be used for continuing support for the new building in Naubinway, and to continue the growth of the Top of the Lake Snowmobile Museum.

☐ Other ☐ \$100 ☐ \$500 ☐ \$1000 ☐ Pledge

Name/Business _____

Address _____ City _____ State _____ Zip _____

Phone _____ Email _____

Amount \$ _____ ☐ Check ☐ Cash ☐ Credit Card (Please call with card information)

Pledge: Financial _____ Labor _____

The Museum is still seeking funding for the stone work on the outside of the building; completion of the driveway; 60 chairs for the meeting room, 3 chairs for the fireplace area, and donations to help with a new sign to put up in front of the building.



Preschoolers liked the Airtsled

Engadine Preschool Visits the Museum March 6, 2014

"The Preschool is run by Consolidated Community School Services out of Pickford but is housed in Engadine and other schools in the EUP. Hopefully more school districts will take advantage of this wonderful museum. Our goal was to introduce the preschoolers to the different cultural opportunities we have in our surrounding area. The museum has helped to enhance the education for all ages." (Diane Miller, teacher)
It was so much fun to see the snowmobiles through the eyes of a 4 year old.



Dad, Brian Kovar, gives students a ride

In Memory of Tamra Edgerton



We want to express our sorrow for the recent loss of a great snowmobiling friend, Tam Edgerton. She and her husband, Fred, went to the Rapid River, MI show, January 25, and stopped here at the museum on their way home. On Feb. 5 she was tragically killed by a drunk driver near West Branch. Words can't express how much she will be missed.

Shipwreck Museum Special:

Experience a special time of year at Whitefish Point and enjoy reduced rates in the restored 1923 USCG Crew's Quarters. This offer will last from April 1, 2014 through May 31, 2014. Guests will pay only \$125 per night (standard rate=\$150 per night) and members will pay only \$100 per night. Included in this rate is a one year membership in the Great Lakes Shipwreck Historical Society. Please call 800-635-1742 for more information.

Check out the Museum on Facebook

Facebook has become our main source of information from the Museum to our many fans.

We started last summer with pictures of the building process and it has continued as an events information page, and general comments about what is happening at the Museum. We are also putting on a "Sled of the Day" with information about the machine. (You do not need a Facebook account to view our Facebook page.)

One cool posting was when a group of antique & vintage riders met at the Starline Dock in St. Ignace, MI and rode across the "Ice Bridge" to Mackinac Island (see picture below.) They actually went twice (the ice isn't always this good!) – on Feb. 16 and again on March 9, 2014. .



Michigan Activity Pass



The Museum is participating in "Michigan Activity Pass" program. This program is for library patrons to be able to get passes to cooperating venues in the state of Michigan. The Museum has a pass available for one free admission with a paid admission. The pass is available online or at your local library, if they are participating. The website is:

www.michiganactivitypass.info

St. Ignace Tractor & Snowmobile Show

Plans are being set with the St. Ignace, MI Chamber of Commerce and Events Committee to have a Snowmobile Show in conjunction with their annual Tractor Show. The dates will be Sept. 5 & 6, 2014. The Snowmobile Show will be held inside the Little Bear Arena, downtown St. Ignace.

It is recommended, if possible, for the snowmobiles to come in on Thursday evening. The tractors (over 900 last year) come in on Friday morning for the parade across the Mackinac Bridge, and it's very congested in St. Ignace and Mackinaw City. We will have more information coming. The Museum will be doing pre-registration, so check our Facebook page and website for updated information. Help us make this a great fun event!



Amazon Smile Program

AmazonSmile is a simple and automatic way for you to support your favorite charitable organization every time you shop, at no cost to you. When you shop at Amazon Smile you'll find the exact same low prices, vast selection and convenient shopping experience as Amazon.com, with the added bonus that Amazon will donate 0.5% of the purchase price to your favorite charitable organization.

To shop at AmazonSmile, simply use the URL below in which links to a special AmazonSmile landing page for TOP OF THE LAKE SNOWMOBILE MUSEUM. Amazon Smile Website: <http://smile.amazon.com/ch/61-1513668>

amazon.com



Left: This map is in our entryway.

Be sure to stop and add a pin to show where you're from. We even had a visitor here from Austria who came in with two men from PA & 2 men from Norway!

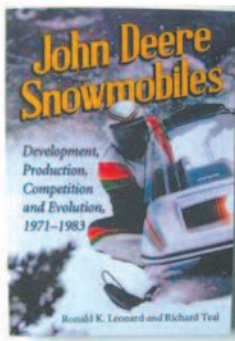


Rogers City Snowmobile Show Committee Does it Again!

On March 13, we received another great surprise from the Rogers City Snowmobile Show Committee. Dan Derry and Bill Bannon delivered this 50" TV! The Rogers City Snowmobile Club donated a 39" TV last Fall. We will put this 50" in the meeting room, and the 39" will find a new home in the gift shop area. We appreciate the amazing support from the Rogers City groups!

Attention Advertisers: We are now offering a quarter page ad for \$60. Call Marilyn for more information.

Now Available in our gift shop: The new John Deere, Snowmobile book!



Top of the Lake Snowmobile Museum
Receive \$5.00 in Kewadin Credits with entry!!
Earn 10 points and receive an additional \$5.00 in Kewadin Credits!!

Kewadin CASINO
This is Kewadin Country.

Kewadin Credits Now Available

\$5 in Kewadin Casino credits are now available when you pay your admission fee. Please ask for a coupon.

JOHN A. GRIFFIN

P.O. Box 190
Hessel, MI 49745

Toll Free: 800-861-0033

Direct Line: 906-484-2022

johngriffinrealestate@yahoo.com



www.johngriffinrealestate.com

New Building Report:

We are so thrilled to report that the new building in the new location is working out above and beyond our expectations! We moved in and opened on October 19, 2013. Our attendance has either tripled or almost tripled every month. More donations are coming in, our meeting room is being used by several groups, and we have met so many great people from all over the United States (and Austria and Norway).

Be sure to stop in anytime – we will constantly be making changes as our inventory grows, along with our ideas. Thankfully, John Batchelder retired from MDOT just before we opened and he has become a very important volunteer for us. Please note that we are all volunteers and if it does happen that none of us can be here one day, we will post it on Facebook.



Museum Meeting Room

Hold your meeting/event at our facility. Our 750 square foot conference room has a 50 person capacity.

We are located on the North side of Hwy US-2 in downtown Naubinway, Michigan. Please call 906-477-6298 for pricing and availability.

Amenities include:

- Internet, WiFi, Projector, Phone Conferencing
 - Handicap accessible facility including rest rooms
 - Large parking lot right off US-2 in Naubinway
 - Kitchenette (coffee, pop, juice, water & snacks, microwave)
 - Lunch / Dinner / Appetizers / Snacks / Desserts Catered (ask for information details & price)
 - Free museum tours with use of the facility
- Next winter snowmobiling groups – plan your trip to the museum and we can have a catered pizza, deli sandwiches, or pastie lunch provided! Call 906-477-6298 to schedule and for the cost of lunch.



Soo I-500, Memories At the Mile, Vintage Snowmobile Show

The Museum hosted the Soo I-500 Vintage Show on Feb. 1, 2014. This was our first year as hosts and we had 45 snowmobiles make the Vintage Lap just before the beginning of the official 2014 Soo I-500 race. There were 77 snowmobiles on display during the day. Making a lap around the I-500 track is one of the things to check off a bucket list!

Pictured below are Craig and Sharon Oliver, sponsors of the People's Choice trophy, along with Lou Hunt and his 1973 Polaris Starfire (which he raced at the I-500 in 1973.) Congratulations Lou! We also want to thank Steve & Sherry Landon, of Winning Edge Magazine, for designing the dash plaque (lower right below.)



We plan on hosting this show again next year, the first Saturday in February. When it gets closer to the show, contact the Museum for more information or watch our facebook page.

Right: This is a picture of the dash plaque that the Museum gave to the people who entered a snowmobile in the show.



Modern Concrete Surfaces

Concrete Resource

* POLISHED
* STAINED
* NATURAL

John P. Jared
Field Support

Office 517-543-5531 Cell 269-838-1116

(906) 643-9940 THURSTON CHIROPRACTIC CLINIC



Dr. David J. Thurston
135 BERTRAND ST. • SAINT IGNACE, MI 49781

FORWARD




TODD SEELYE
CONCRETE, INC.


231-825-2819 Cell: 231-846-1928
10990 S. FORWARD RD. • MARION, MI 49665

Village Pizza
Pick-Up, Delivery, or Dine-In
(906) 477-1111
U.S. 2 - NAUBINWAY
Located Across From Snowmobile Museum

VINYL GRAPHICS
LAURSEN ENTERPRISES INC.
Trucks Cars Boats Trailers
Bikes Signs Banners
BRENT LAURSEN
906-322-7238



Doug's Vintage Arctic Cat's
Vintage Arctic Cat's 1962 TO 1982
Doug Lubahn
2103 Vernor Rd.
Lapeer, MI 48446
810-441-0530
dlubahn@absolute.com
DOUGSVINTAGESLEDS.COM



Bowman Gas Company, Inc.
Propane Gas, Sales and Service
Bulk Storage Tanks, Cylinders
Residential & Commercial Installations

3 Locations

PO Box #8 Gulliver, MI 49840 906-283-3443	12046 ST Hwy M28 Newberry, MI 49868 906-293-2930	E10060 ST Hwy M28 Wetmore, MI 49895 906-387-4660
---	--	--



www.Fish and Hunt Shop.COM



P.O. Box 219, W17148 Main St.
Curtis, Michigan 49820
Toll Free: 1-877-586-9531
Ph: 906/586-9531
Fax: 906/586-3808

Flexible, Strong, Reliable
Kink and Abrasion Resistant
Temps from -65F to 223F

WWW.FUEL-LINE.COM
Premium-quality colored fuel line

Jet Skis, Snowmobiles,
Go Carts, ATVs, Boats,
Motorcycles, Scooters
Email: sales@fuel-line.com
FAST FLOW FUEL LINE
Engineered & Manufactured in the USA

**BEAUDOIN'S
MARATHON
SERVICE**

P.O. Box 161
US-2

Naubinway, MI
49762

906-477-6900

BEARY PATCH RESTAURANT


W14740 US 2
2 Miles West of M-117
Engadine, MI 49827

Located on US 2
906-477-6214



HOURS OPEN:
7am - 2pm Every Day
Breakfast All Day

Great Food!



**ARCTIC RESTORATION
SPECIALTIES, INC.**
Specializing In Reproduction
and NOS Arctic Cat Parts
"YOUR ONE STOP CAT SHOP"

BILL ADAMS (320) 248-5577
JERRY LEGATT (320) 290-5239

225 1st Street SW • P.O. Box 294 • Rice, MN 56367
www.arcticrestoration.com

Groceries • Meats • Produce • Lottery

VALLIERS STORE

W1161 HWY U.S. 2 NAUBINWAY, MI 49762

906-477-6261
P.O. BOX 68 Fax 906-477-1000
Hardware • Red Wing Boots
Liquor • Beer • Wine



Free Wi-Fi
Gourmet Coffee
Deli Sandwiches
Soup & Salad
Smoothies ~ Ice Cream
Gift Shop ~ Local Art

Located on US2 in Naubinway (906) 477-1120
www.anchorinnaubinway.com

Sales * Parts * Accessories * Service * Storage * Rentals



10964 90th Ave
Mecosta, MI 49332
Phone (231) 972-4146
Toll Free 888-533-5015
Fax (231) 972-4211

info@lakesidemotorsports.net
www.lakesidemotorsports.net



Ski-Doo
Sea-Doo
Alumacraft Boats
Mirrocraft Boats

Sea-Doo Jet Boats
CanAm ATV
CanAm Spyder
Evinrude

SIMONAR SPORTS

1601 Main Street
Luxemburg, WI 54217
Simonarsports@centurytel.net

DEAN (DINO) SIMONAR
V.P./Sales Mgr.

(920) 845-2725
FAX (920) 845-5850
(800) 303-1171

MON-WED-FRI 8am-8pm TUES-THURS 8am-5pm SAT 8am-4pm SUN CLOSED

Antique Snowmobile Museum of Indiana



Daniel C. Blaney, J.D.
Executive Director & Curator

PO Box 500
Morocco, IN 47963
219.285.2008

dblaney@blaneyandwalton.com

Advertisers

GARLYN ZOO
Experience the Wild!
Open 7 Days 10 - 6
(April - October)
906-477-1065
www.garlynzoo.com
Listed Attraction
60 minutes west of St. Ignace on US 2 - Naubinway, MI 49762

LOST VIKING ENTERPRISES
Rick & Nancy Mallory Cass City, Michigan
New & Used Snowmobile Parts
Buy - Sell - Trade
Home of The Lost Viking
malloryr@avci.net
989-872-9965 -or- 989-551-7533

TWIN TRACK WORLD
The Official Website for:
RAIDER MANTA TRAIL BLAZER
www.twintrackworld.com

Siler's
Stump Grinding & Snowblowing
Mike Siler
231-409-4183
mikesiler48@hotmail.com
www.silerssnowblowing.com
www.silersstumpgrinding.com
10401 E. Carter
Traverse City, MI 49684

WANTED VINTAGE POLARIX TX
Mike Siler 231-409-4183
A440snopro@hotmail.com

King's Fish Market Retail & Junk Shop
FISHING • SOUVENIRS • SMOKED FISH • BAIT
Owned and Operated by Russ & Sally Schultz
Ph: (906) 477-6311
W11647 US-2
Naubinway, Michigan 49762

Dr. Mario's Vintage Polaris Parts
POLARIS
Don Soukup
3031 Idlewild Rd.
Sturgeon Bay, WI 54235
(920) 743-7660
drmario@wildblue.net

WANTED DEAD OR ALIVE



MASSEY-FERGUSON

Ski Whiz

Snowmobiles & Memorabilia
David Shope • 906-280-6630
Rapid River, MI

GASOLINE - FUEL OIL
PROPANE - DIESEL
MOTOR OIL

SHUTE OIL CO.

DAVE SHUTE

P.O. Box 307
MAIN & MACKINAC TRAIL
RUDYARD, MI 49780

PHONE:
906-478-3271



GREAT LAKES • GREAT FISH
BUS. PH. (906) 477-6027

Carl & Don Frazier, Inc.

WHOLESALE - RETAIL FISH
COR. ARBOR & MAIN
NAUBINWAY, MI 49762

CARL - 477-6504
DON - 477-6294



Best D&D HOME CENTER

W41006 Melville St.
Engadine, MI 49827

7387 M-123
Newberry, MI 49868

Ph (906) 477-6881
Fx (906) 477-6890

Ph (906) 293-5508
Fx (906) 293-5579

www.dd.doitbest.com



RON GIANNUNZIO

FUEL DIST. INC.

HOME HEATING OIL - DIESEL FUEL

EXCELLENT SERVICE

PO Box 298, Big Bay, Michigan 49808

Covering a 25 mile radius of Marquette
OIL - THE WARMER HEAT

Toll Free 1-877-222 Fuel
Bus Phone (906) 345-0200
Fax Phone (906) 345-0085



ROTH'S RESORT MILLECOQUINS LAKE

N7225 Main Street
Engadine, MI 49827

Larry & Kelly
Roth

906*477*6123
kraerorth@sbcglobal.net
Facebook/Roth's Resort

ANTIQUE and VINTAGE
SNOWMOBILE ASSOCIATION
of BIG BAY
P.O. Box 298
Big Bay, MI 49808
906-345-9849



WE DELIVER

www.NealsTruckParts.com

Aaron R. Schroeder

2111 Chicago Dr. S.W. Grand Rapids, MI 49509
GR Business (616) 245-0436 Fax (616) 245-9060

GRAND RAPIDS TOLL FREE USA 1-800-662-0006

ALSO IN NEWBERRY

1000 Handy Street Downtown Newberry, MI 49868
(906) 293-5909 or Toll Free NEWBERRY ONLY 1-800-572-8899

Go Go Diablo



Bruce Schoblaska

6555 Kawula Lane
Sobieski, Wisconsin 54171 USA
920-676-7562 Evenings & Weekends
email: bruce@gogodiablo.com
Web Site: gogodiablo.com



JANUARY

23-25, 2015

651-649-4688

www.mwvss.com



White Pine Lodge

Any Season, Any Reason
White Pine Lodge is the perfect
place to end your day!

Melinda
Savola
General
Manager

E 7889 W. M-28 • Christmas, MI 49862

906-387-1111

info@whitepinelodgeonline.com • whitepinelodgeonline.com



Shipwreck Coast Museum Store

18335 N. Whitefish Point Rd.
Paradise, Michigan 49768
1-888-492-3747
FAX (906) 492-3383

Open Daily
May to October
10 a.m. to 6 p.m.

Visit our Online Store!
www.shipwreckmuseum.com



**ROGER
ST. ANDRE**

Spirit of the Wood

CUSTOM CARVING

18138 US HWY 41 • L'ANSE, MI 49946

1-906-524-6364



Judi's Hair Care

Jennifer Lancour
(906) 477-6201

Hours:

Tues.: Noon-5

Wed.-Friday: 9-5

Sat.: by Appointment

late appointments available

Pedicures, Manicures, Facials, Ear candling,
Waxing, Poling, Full Coloring, Perms,
Parafin waxing, Haircuts, and More.

Make Your Appointment

TODAY!!!

"Barnyard" on Trout Lake

AMSOIL

www.exploringthenorth.com

MARK VONDERWERTH

(906) 569-3821

Synthetic lubricants

ZO#36658

Firewood • Backhoe Work • Odd Jobs

CABIN RENTAL - (906) 569-3821



Year Round Weekly Rental

Strouble Lake
Reflections, Inc.

Email:

stroublelakereflectionsinc@
hotmail.com

Phone: (906) 595-7245 or
(906) 440-5641

PHONE (906) 477-6263
FAX (906) 477-1101
medwards@fnbsi.com

First National Bank of St. Ignace

Merle J. Edwards
Branch Manager
West Mackinac Branch

FDIC Insured

P.O. BOX 142
NAUBINWAY, MI 49762



John Matchinski Builder, Inc.

P.O. Box 213

Engadine, Mi. 49827

Phone: 906-477-6825 Fax: 906-477-6865

Licensed & Insured

Together We Achieve The
Extraordinary



JohnGriffinRealestate.com

906.484.2022

JohnGriffinRealestate@yahoo.com

Helping Families Like Yours
Since 1978

CertainTeed
SAINT-GOBAIN

Roger Werner
Application Sales Specialist

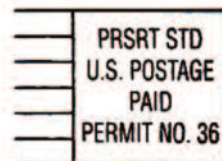
CertainTeed Siding

803 Belden Road
Jackson, MI 49203
Tel: (904) 400-1587 • Fax: (610) 254-1978
Toll Free: (800) 359-7298 ext. 4562
roger.werner@saint-gobain.com
www.certainteed.com

Top of the Lake Snowmobile Museum

W11660 US 2

Naubinway, MI 49762



Top of the Lake Snowmobile Show



*September 5-6, 2014
St. Ignace, MI
Tractor Show*